



Aksion Tech

dental excellence



Your partner for implantology

ΑΠΟΚΛΕΙΣΤΙΚΟΣ ΑΝΤΙΠΡΟΣΩΠΟΣ:  Aksion Tech

Η **Aksion Tech** δημιουργήθηκε από ανθρώπους που δραστηριοποιούνται δυναμικά στον οδοντιατρικό χώρο από το 1995. Βασική αρχή της εταιρίας αποτελεί η αξιοπιστία τόσο στα προϊόντα της, όσο και στις παρεχόμενες υπηρεσίες.

Το ανθρώπινο δυναμικό της εταιρίας πλαισιώνουν καταξιωμένοι επιστήμονες από τον ευρύτερο χώρο της Οδοντιατρικής και της Ιατρικής, με στόχο την σωστή καθοδήγηση των πελατών μας, ξεκινώντας από την κατάλληλη επιλογή των προϊόντων έως και την κλινική εφαρμογή τους στους ασθενείς.

Στην **Aksion Tech** έχουμε εγκαταστήσει και εφαρμόζουμε ένα σύστημα διασφάλισης ποιότητας συμφωνά με το διεθνές πρότυπο ISO 9001/2015. Με τον τρόπο αυτό και την συνεχή επιμόρφωση των ανθρώπων μας σε θέματα εξασφάλισης ποιότητας και ικνηλασιμότητας έχουμε δημιουργήσει τις απαραίτητες συνθήκες για την απολυτή ασφάλεια των προϊόντων μας.

Η **Aksion Tech** είναι ο αποκλειστικός αντιπρόσωπος της Γαλλικής εταιρίας **ETK – Lyra** για την Ελλάδα και την Κύπρο.

Η **ETK- Lyra** αποτελεί μια αμιγώς Γαλλική εταιρεία η οποία ειδικεύεται στον τομέα της οδοντικής εμφυτευματολογίας, προσφέροντας ολοκληρωμένες λύσεις τόσο στο χειρουργικό όσο και στο προσθετικό κομμάτι από το 1992.

Αξιοποιώντας δεκαετίες επιστημονικής έρευνας και ενσωματώνοντας την εξέλιξη της μικρομηχανικής τεχνολογίας η **ETK - Lyra** κατασκευάζει υψηλής ποιότητας και αξιοπιστίας εμφυτεύματα, τα οποία εξασφαλίζουν κορυφαίο λειτουργικό και αισθητικό αποτέλεσμα.

Με περισσότερο από 25 χρόνια κλινικών μελετών, πάνω από 100 ειδικούς σε θέματα εμφυτευματολογίας, περίπου 600 άτομα ανθρώπινο δυναμικό, σύγχρονες εργαστηριακές εγκαταστάσεις και ακολουθώντας πιστά τις Ευρωπαϊκές Οδηγίες, εγγυάται 100% ποιοτικό έλεγχο των εμφυτευμάτων και των προσθετικών εξαρτημάτων τόσο όσον αφορά τις αισθητικές συνθήκες και τα πρωτόκολλα αποστείρωσης, όσο και την μικροσκοπική ακρίβεια των μορφολογικών χαρακτηριστικών.



Your European partner for quality treatment

- 100 % French design and production
- 25 years of clinical experience
- 98% success rate from across a broad
- 5500 practioners use our implants in France



**Implants that offer the same guarantees
as premium brands at a reasonable price.**

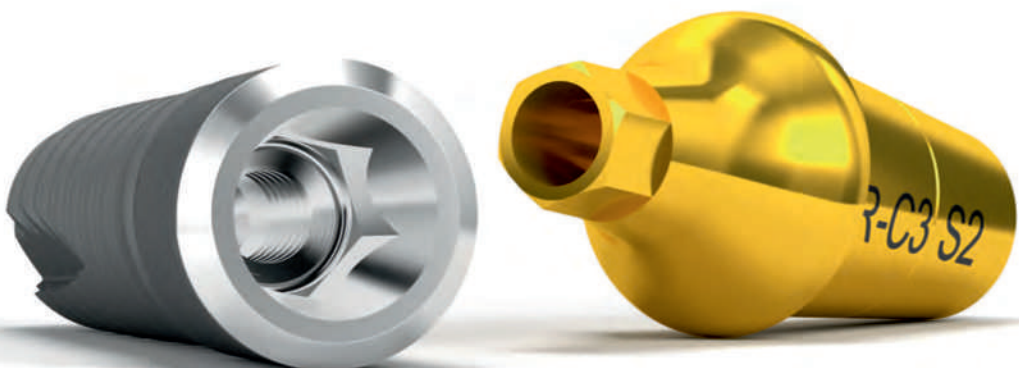
1 common prosthetic range



1 single prosthetic connection



3 implant systems





FRENCH
MANUFACTURER

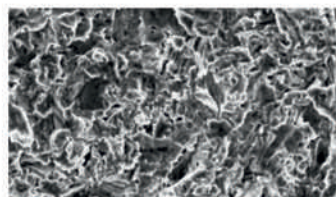
Naturactis

NATURALLY ACTIVE IMPLANT

120€

10+2
ΔΩΡΟ

Titanium oxide micro-sandblasting
and etching with nitric
and hydrofluoric acids.



Bone-implant contact surface increased
by 79.2%

References

Implants Ø 3.5 to 5 (pure grade IV titanium). The implants are supplied with a cover screw.



- Internal hexagonal conical connection
 - the same for all implant diameters
 - compatible with Naturall+ and Nateat+ implants

- Cylindroconical implant
- Subcrestal placement
- High primary stability
- Strong apical anchoring

INDICATIONS

- Post-extraction surgery
- Immediate loading
- Areas with low bone density (D3-D4)

CONTRAINDICATIONS

- Sinus floor region

Length	● Ø 3,5	● Ø 4	● Ø 4,5	● Ø 5
6 mm	-	-	NIP 45 060	NIP 50 060
8 mm	NIP 35 080	NIP 40 080	NIP 45 080	NIP 50 080
10 mm	NIP 35 100	NIP 40 100	NIP 45 100	NIP 50 100
12 mm	NIP 35 120	NIP 40 120	NIP 45 120	NIP 50 120
14 mm	NIP 35 140	NIP 40 140	NIP 45 140	NIP 50 140
16 mm	NIP 35 160	NIP 40 160	NIP 45 160	-
18 mm	NIP 35 180	NIP 40 180	-	-

20
Εμφυτεύματα
(αξίας 2.400€)
+
10
Abutment Esthetibase
(αξίας 550€)
+
Χειρουργική Κασετίνα
(αξίας 1.500€)

2.000€



FRENCH
MANUFACTURER

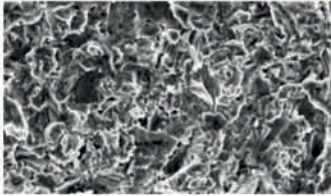
Naturall+

ANATOMICAL IMPLANT

120€

10+2
ΔΩΡΟ

Titanium oxide micro-sandblasting
and etching with nitric
and hydrofluoric acids.



Bone-implant contact surface increased
by 79.2%



- Internal hexagonal conical connection
 - the same for all implant diameters
 - compatible with Naturactis+ and Natea+ implants

- Tapered implant
- Bone level
- High primary stability

INDICATIONS

- All areas
- All bone densities
- Sinus floor region
- Post-extraction surgery
- Immediate loading

References

Implants Ø 3.5 to 5 (pure grade IV titanium). The implants are supplied with a cover screw.

Length	● Ø 3,5	● Ø 4	● Ø 4,5	● Ø 5
6 mm	-	-	NICP 45 060	NICP 50 060
8 mm	NICP 35 080	NICP 40 080	NICP 45 080	NICP 50 080
10 mm	NICP 35 100	NICP 40 100	NICP 45 100	NICP 50 100
12 mm	NICP 35 120	NICP 40 120	NICP 45 120	NICP 50 120
14 mm	NICP 35 140	NICP 40 140	NICP 45 140	NICP 50 140

20
Εμφυτεύματα
(αξίας 2.400€)

+

10
Abutment Esthetibase
(αξίας 550€)

+

Χειρουργική Κασετίνα
(αξίας 1.500€)

2.000€

Complete surgical KIT

This surgical kit offers all the instruments necessary to achieve the surgical protocol and to manage all the bone densities for Naturactis and Naturall+ implants.

1.500€

ΔΩΡΟ με την
αγορά 20
εμφυτευμάτων



Contents:

- Point drills \varnothing 1.5 - 2.2 and \varnothing 2.2
- Initial cylindrical drills \varnothing 2.2 lengths: 6, 8, 10, 12, 14, 16, 18 mm
- Depth gauge \varnothing 2.2
- Staged drills \varnothing 2.2 - 2.8 long & short
- Staged drills \varnothing 2.8 - 3.3 long & short
- Staged drills \varnothing 3.3 - 3.8 long & short
- Staged drills \varnothing 3.8 - 4.3 long & short
- Staged drills \varnothing 4.3 - 4.8 long & short
- Cortical drills Naturall+ \varnothing 3.5 / \varnothing 4 / \varnothing 4.5 / \varnothing 5
- Hard bone drills Naturall+ \varnothing 3.5 / \varnothing 4 / \varnothing 4.5 / \varnothing 5
- Taps Naturactis \varnothing 3.5 / \varnothing 4 / \varnothing 4.5 / \varnothing 5
- Paralleling pins \varnothing 2.2
- Paralleling implant gauge
- Implant direct keys: short, medium & long
- Implant direct mandrels short & long
- External hexagonal keys long, medium & short
- External hexagonal mandrels short & long
- Mandrel extension
- Click wrench



This kit includes all the instruments necessary to place all lengths and all diameters of Naturactis and Naturall+ implants, in all bone densities.

Simple and compact.

One kit for 2 implant systems.

Reduced format for increased space on a sterile field and in an autoclave.

Legibility of sequences thanks to the layout of the instruments in order of use and protocol table.

Colour coding of plugs according to implant diameter.

Προσθετικά

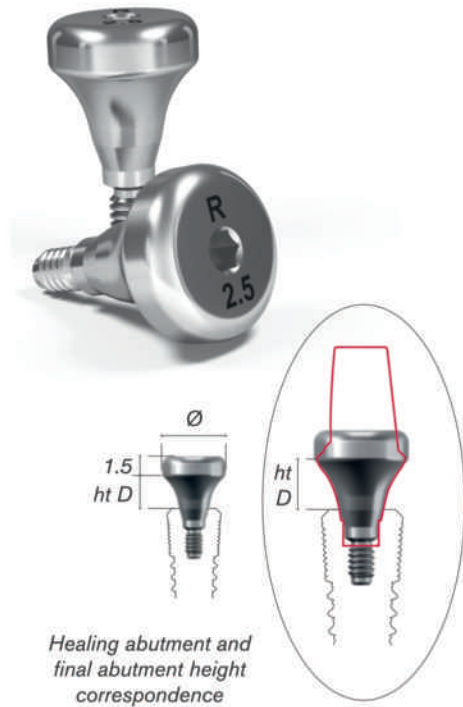


✓ Ίδια σύνδεση
για τα δύο συστήματα

✓ Ίδια σύνδεση
για όλες τις
διαμέτρους των εμφυτευμάτων.

Healing Abutments

Healing abutments



Titanium.



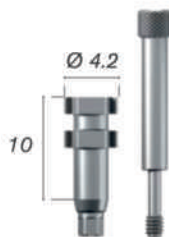
Prosthetic profiles	Healing abutments references	Supra-implant heights D
EP ø 3.6	NCI 36 23	0.5
	NCI 36 34	1.5
	NCI 36 45	2.5
	NCI 36 56	3.5
	NCI 36 67	4.5
NP ø 4.6	NCI 46 23	0.5
	NCI 46 34	1.5
	NCI 46 45	2.5
	NCI 46 56	3.5
RP ø 5.2	NCI 46 67	4.5
	NCI 52 23	0.5
	NCI 52 34	1.5
	NCI 52 45	2.5
WP ø 6	NCI 52 56	3.5
	NCI 52 67	4.5
	NCI 60 34	1.5
	NCI 60 45	2.5
	NCI 60 56	3.5
	NCI 60 67	4.5

25€

5+1
ΔΩΡΟ

Impression - Continuation

Short pick-up impression coping



Supplied with a titanium laboratory screw (ref. NPS VG 16 200).



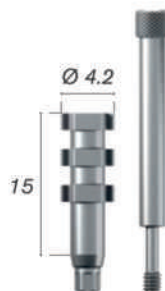
Open tray impression taking.



Titanium.

35€

Long pick-up impression coping



Supplied with a titanium laboratory screw (ref. NPS VG 16 250).



Open tray impression taking.



Titanium.

40€

Implant analog



Can be cut for use with pins.



Titanium.

15€



FRENCH
MANUFACTURER



STRAIGHT AND ANGULATED ABUTMENTS

For single and multi-unit prosthesis

4 prosthesis platforms available:



5 supra-implant heights: 0.5 / 1.5 / 2.5 / 3.5 / 4.5 mm.

3 angles: 7°, 15° and 20°.

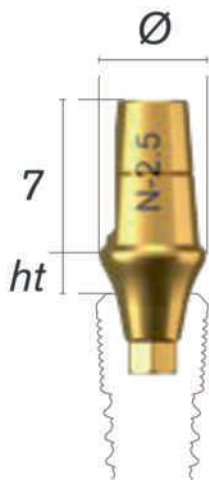
Nitrided abutments for a better aesthetic result.

Abutments delivered with a titanium fixing screw: the screw is secured thanks to an interior threading of the prosthetic part to avoid sudden collapse.

Fixing screw with "anti-unscrewing" treatment.

Laser marking to identify the prosthesis platform and supra-implant height of the abutments.

Straight Abutments



Supplied with a titanium fixing screw
(ref. NVP 35) with anti-unscrewing
treatment.



Titanium.



60€

5+1
ΔΩΡΟ

	ht	EP ø 3.6	NP ø 4.6	RP ø 5.2	WP ø 6
References	0.5	NPS PD 36 06	NPS PD 46 06	NPS PD 52 06	---
	1.5	NPS PD 36 16	NPS PD 46 16	NPS PD 52 16	NPS PD 60 16
	2.5	NPS PD 36 26	NPS PD 46 26	NPS PD 52 26	NPS PD 60 26
	3.5	NPS PD 36 36	NPS PD 46 36	NPS PD 52 36	NPS PD 60 36
	4.5	NPS PD 36 46	NPS PD 46 46	NPS PD 52 46	NPS PD 60 46

Angulated Abutments

70€

5+1
ΔΩΡΟ

7° angulated abutments



Supplied with a titanium fixing screw (ref. NVP 35) with anti-unscrewing treatment.



ht = supra-implant height.

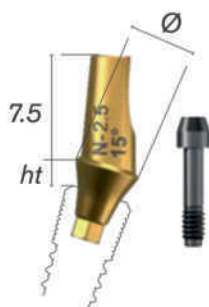


Titanium.



	ht	EP Ø 3.6	NP Ø 4.6	RP Ø 5.2	WP Ø 6
References	0.5	—	NPS PA 46 07 1	NPS PA 52 07 1	—
	1.5	NPS PA 36 07 2	NPS PA 46 07 2	NPS PA 52 07 2	NPS PA 60 07 2
	2.5	NPS PA 36 07 3	NPS PA 46 07 3	NPS PA 52 07 3	NPS PA 60 07 3
	3.5	NPS PA 36 07 4	NPS PA 46 07 4	NPS PA 52 07 4	NPS PA 60 07 4

15° angulated abutments



Supplied with a titanium fixing screw (ref. NVP 35) with anti-unscrewing treatment.



ht = supra-implant height.



Titanium.



	ht	EP Ø 3.6	NP Ø 4.6	RP Ø 5.2	WP Ø 6
References	0.5	—	NPS PA 46 15 1	NPS PA 52 15 1	—
	1.5	NPS PA 36 15 2	NPS PA 46 15 2	NPS PA 52 15 2	NPS PA 60 15 2
	2.5	NPS PA 36 15 3	NPS PA 46 15 3	NPS PA 52 15 3	NPS PA 60 15 3
	3.5	NPS PA 36 15 4	NPS PA 46 15 4	NPS PA 52 15 4	NPS PA 60 15 4

20° angulated abutments



Supplied with a titanium fixing screw (ref. NVP 35) with anti-unscrewing treatment.



ht = supra-implant height.



Titanium.



	ht	EP Ø 3.6	NP Ø 4.6	RP Ø 5.2	WP Ø 6
References	0.5	—	NPS PA 46 20 1	NPS PA 52 20 1	—
	1.5	NPS PA 36 20 2	NPS PA 46 20 2	NPS PA 52 20 2	NPS PA 60 20 2
	2.5	NPS PA 36 20 3	NPS PA 46 20 3	NPS PA 52 20 3	NPS PA 60 20 3
	3.5	NPS PA 36 20 4	NPS PA 46 20 4	NPS PA 52 20 4	NPS PA 60 20 4



FRENCH
MANUFACTURER

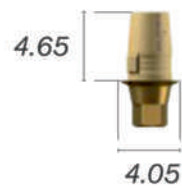
TITANIUM ESTHETIBASE INTERFACES

55€

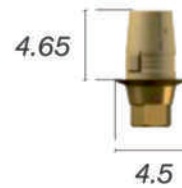
5+1
ΔΩΡΟ

- **Titanium interfaces** for:
 - CAD-CAM prosthesis.
 - Profile Designer iphysio®
- **Nitrided surface** = invisible under the gingiva.
- **2 bases:**
 - Rotational for multi-unit cases.
 - Non-rotational for single cases.
- **3 platforms :**

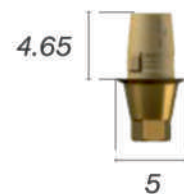
Platform S



Platform L



Platform XL



Tetra Conical Abutments

For single and multi-unit prosthesis



Permits the fitting of **single prosthesis** on straight Tetra abutments only and **multi-unit prosthesis** on straight and angled Tetra abutments, whether the implants are parallel or highly divergent.

Design adapted to the **early or immediate loading** in the case of multiple prosthesis.

Straight and angled (17° and 30°) abutments available.

Wide range of supra-implant heights: 0.5 / 1.5 / 2.5 / 3.5 / 4.5 mm.

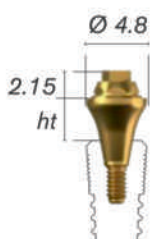
Nitrided abutments for a better aesthetic result.

Abutments are supplied with abutment holders in order to facilitate their grip and placement.

Common secondary components for straight and angled abutments, for multi-unit prosthesis.

4.8 mm diameter shoulder for good prosthetic support.

Straight Tetra abutments



Supplied with a single use plastic abutment holder.

For the screwing of straight abutments use the internal hexagonal key (ref. CCL HI 20 24) or the internal hexagonal mandrel (ref. UMA HI 20 26).

ht = supra-implant height.



Titanium.

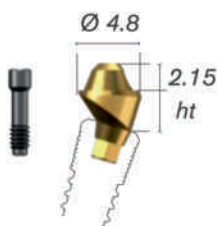


ht	References
0.5	NPV PT 48 1
1.5	NPV PT 48 2
2.5	NPV PT 48 3
3.5	NPV PT 48 4
4.5	NPV PT 48 5

75€

5+1
ΔΩΡΟ

17° angled Tetra abutments



Supplied with a titanium fixing screw (ref. NVP VPA 35) with anti-unscrewing treatment.



Supplied with a reusable titanium abutment holder. Abutment with hexagonal base (non-rotational).
ht = supra-implant height.



Titanium.

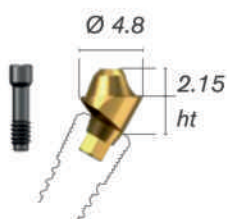


ht	References
2.5	NPV PTA 48 17 25
3.5	NPV PTA 48 17 35
4.5	NPV PTA 48 17 45

110€

5+1
ΔΩΡΟ

30° angled Tetra abutments



Supplied with a titanium fixing screw (ref. NVP VPA 35) with anti-unscrewing treatment.



Supplied with a reusable titanium abutment holder. Abutment with hexagonal base (non-rotational).
ht = supra-implant height.



Titanium.



ht	References
3.5	NPV PTA 48 30 35
4.5	NPV PTA 48 30 45

110€

5+1
ΔΩΡΟ

Προσφορές

20

Εμφυτεύματα

Naturactis ή Naturall+ ή συνδυασμό των δύο
(αξίας 2.400€)

5

Abutments Esthetibase rotational
(αξίας 275€)

5

Abutments Esthetibase anti-rotational
(αξίας 275€)

Χειρουργική Κασετίνα

(κατάλληλη και για τα δύο συστήματα)
(αξίας 1.500€)

2.000€

συνολικό όφελος
2.450€

50

Εμφυτεύματα

Naturactis ή Naturall+ ή συνδυασμό των δύο
(αξίας 6.000€)

10

Abutments Esthetibase rotational
(αξίας 550€)

10

Abutments Esthetibase anti-rotational
(αξίας 550€)

Χειρουργική Κασετίνα

(κατάλληλη και για τα δύο συστήματα)
(αξίας 1.500€)

+

5

Εμφυτεύματα **ΔΩΡΟ**

Naturactis ή Naturall+ ή συνδυασμό των δύο
(αξίας 600€)

5.000€

συνολικό όφελος
4.200€

Προσφορές

Multicentric study on the evolution of 3000 etk and Nobel Biocare implants from 1984 to 1997 – comparison of the results



Authors: Prof. Daniel CHAPPARD - LHEA - Faculty of Medicine of Angers (France)

Aim: The aim of this study is to analyze the effects of different factors on the result (success or failure) of implant placement.

Result: This study was carried out on about 3000 implants placed in different areas. An analysis of the risks was led on patients treated with these implants (alcohol, tobacco, cancer, various combined factors). The influence of bone quantity on the use of different implant diameters was also assessed. This study analyses then the results obtained for the following factors:

- Quality of the implantation site: it affects significantly the clinical results;
- Bone grafting;
- Influence of the implantation site on the results according to the different manufacturers.

Conclusion:

- Trademark (**etk** or Nobel Biocare®): no significant statistic difference was found between the two manufacturers.
- Implant diameter: it appears that it did not affect the clinical results.

Quantitative study on the rough surfaces of titanium dental implants and their microstructures



Authors: Dr Bally, Dr Dehmas, Dr Rapin - University Henry Poincaré (Nancy - France)

Support: Mmoire universit Henri Poincaré, Nancy 1, 27 Juin 2011

Aim: Characterize the roughness of surface of 13 different dental implants. Measures of roughness Sa, Sq and of developed surface Sdr will be done.

Result: On the 13 implants studied, the average Sa is 2.7 (1.7-3.7) and the average Sq is 3.5 µm (2.3-4.9) which is perfectly true to the Bila and Coll 2003 literature. **etk** implants have a 3.1 average Sa and a 4.1 average Sq. For all of the studied implant surfaces, the average Sdr is 4896.1%, which means that the surface is increased by an average of 48.9 times. The **etk** implants have a 7920% average Sdr, i.e. a surface is increased by 79.2 times.

Conclusion: **etk** implants have characteristics of surface superior to the average of the 13 systems.

Histology and histomorphometry – Comparative study with the Universal and Brånemark implants



Authors: Karl Donath Laboratories, Hambourg (Germany) – Dr Guy Hur, Angers Histological Laboratory (France)

Support: euroteknika publication, 1993

Aim: Histological comparison of 2 implant systems.

Result: No significant difference was observed between the 2 implant systems (**etk** and Brånemark).

Conclusion: **etk** implants have surface characteristics that allow their osseointegrations.

4

Placement of Naturactis implants in post-extraction sites



Authors: Ripollés de Ramón J, Gómez Font R, Bascones-Ilundain C, Bascones-Ilundain J, Bascones-Martínez A - University of Madrid (Spain)

Support: AVANCES EN PERIODONCIA Volumen 25 - N° 3 - Diciembre 2013

Aim: To evaluate the primary stability of the Naturactis implant and its level of success to 6, 12 and 18 months.

Result: 60 implants were fitted in the premolar region immediately after the extraction of teeth. 4 implants have been lost in the first months because of sites with infections. These 4 implants have been fitted again 3 months later in the same sites after disinfection. After 12 months of loading, no implant is lost. The primary stability has been measured between 64 and 94 ISQ. The torques were all superior to 35 N.cm. The clinic monitoring of the patients carries on.

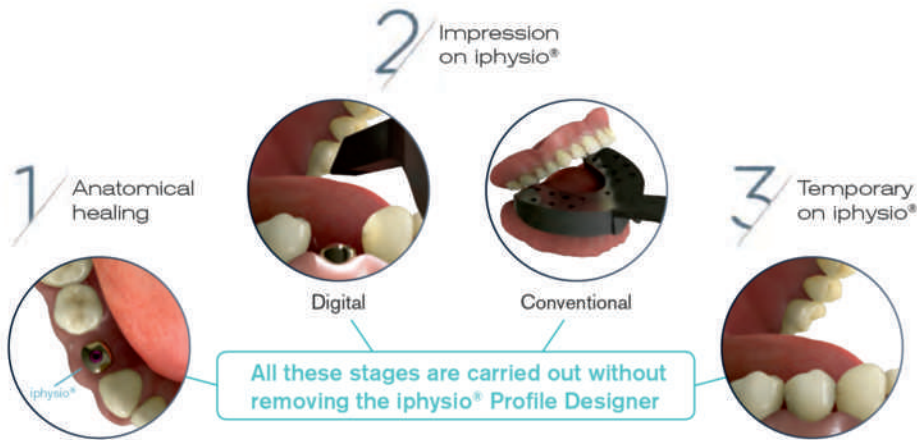
Conclusion: Naturactis implants and their surgery protocols are perfectly suitable for a post-extraction placement. After 12 months, the rate of success is 100%.

EMERGENCY PROFILE

A 3 in 1 solution

This new solution allows to simplify the healing process, the impression technique and the temporization with the iphysio® Profile Designer, without removal and without damage to the mucosa attachment.

PROFILE DESIGNER
iphysio®



Anatomical shape

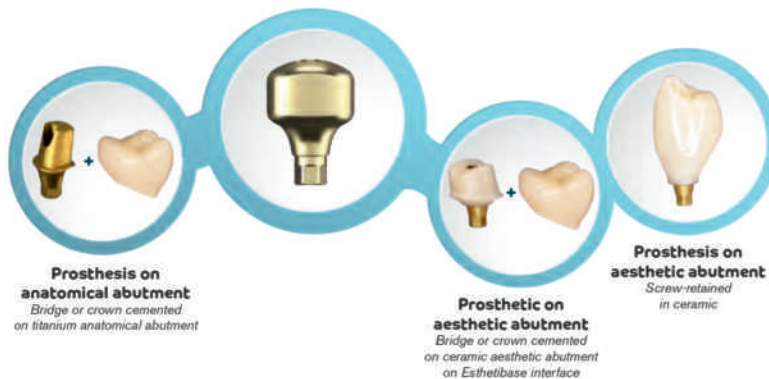
Its anatomical shape will give you the best aesthetic results by:

- the sculpting of a true non-circular anatomical profile
- best compressions, preparations and gingival papillae guides in the inter-dental spaces



Anatomical prosthetic cradle after healing with an iphysio® Profile Designer

Final anatomical and aesthetic prosthetic alternatives





 **etk**
A LYRA COMPANY

- 📍 726 rue du Général de Gaulle
74700 Sallanches (France)
- ☎ 0033 - 450 914 920
- ✉ sales@etk.dental
- 🌐 <https://www.etk.dental/en/>

Your European partner for quality treatment

- 100 % French design and production
- 25 years of clinical experience
- 98% success rate from across a broad
- 5500 practitioners use our implants in France



**Aksion
Tech**
dental excellence

- 📍 Λ.Κηφισίας 125-127
“Cosmos Business Center”
11524, Αθήνα - Ελλάδα
- ☎ 211 18 23 846 | 6938161105
- ✉ info@aksiontech.com
- 🌐 www.aksiontech.com
- 📘 Aksion Tech