

# LYRA-ETK

DIGITAL DENTAL PROTOCOLS

Simple . Safe . Accessible

IMPLANTOLOGY



DIGITAL



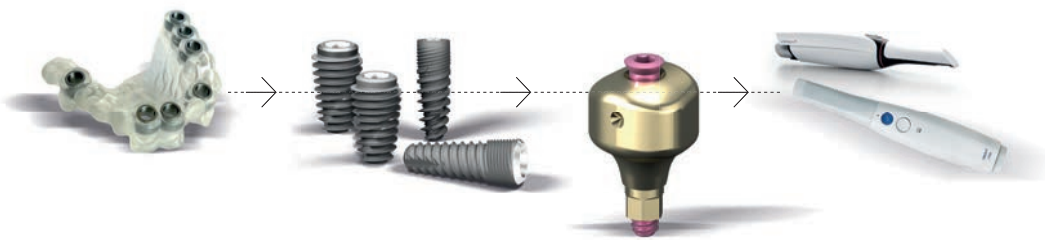
## TWO AREAS OF EXPERTISE

---

LYRA ETK is a **French medtech** company specializing in dental restoration.

It integrates traditional implantology and new digital technologies to offer functional and aesthetic restorative solutions.

LYRA ETK offers **simple, safe and accessible** digital dental protocols for the benefit of dentists, laboratories and patients.





## MADE IN FRANCE

---

LYRA ETK is based at the heart of a **cutting-edge industrial site**, the No. 1 in France for micromechanics and screw-cutting, and **controls every stage in its product manufacturing**. It is associated by France's leading dental supplies and equipment distribution group..



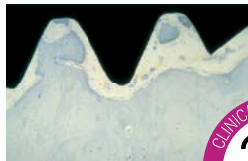
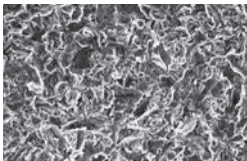
# LYRA ETK PROTOCOLS

- Based on the **most advanced knowledge** of the anatomy and behaviour of peri-implant tissues.
- **Less invasive, more conservative** restorations.
- **Codified protocols, predictable** and **reproducible** performance.
- **Save time in the dental chair** by optimizing procedures.
- Training in procedures **as close as possible to your own practice** (tutoring) and **at your own pace** (e-learning).
- **Compatible** with most intra-oral scanners, implant systems, implant planning and design software.

## SCIENCE AND GUARANTEES

Our protocols are validated **in vitro and in vivo** by the **Scientific Committee**, our **university partners** and independent agencies.

### CERTIFIED SURFACE QUALITY



### PRECISE, LEAK-PROOF TAPERED CONNECTION



## COMMITMENT TO EXCELLENCE

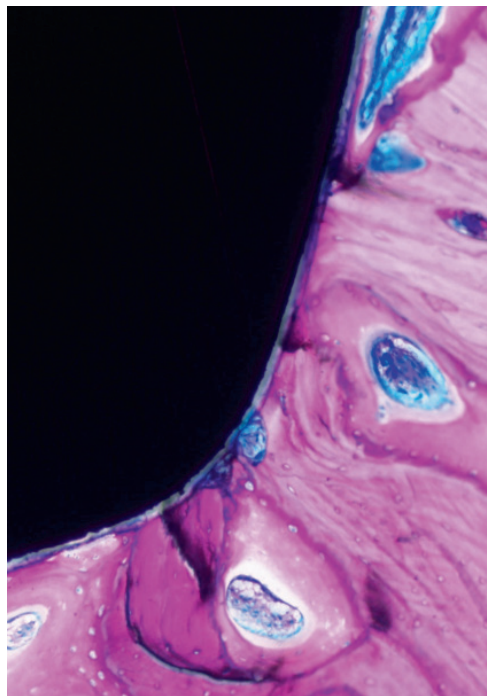
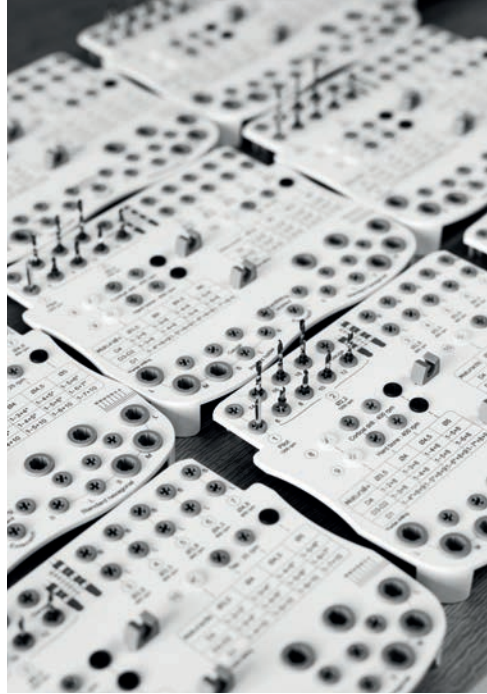


LYRA ETK is committed to excellence and continuous improvement in order to offer the best guarantees.



Implants with lifetime guarantee  
Prosthetic parts guaranteed for 10 years





# INNOVATION IN DNA

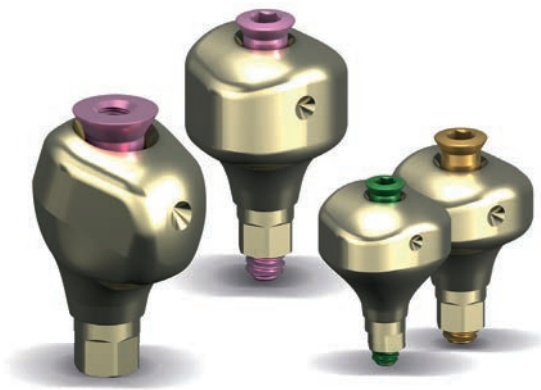


PROFILE DESIGNER  
**i**physio<sup>®</sup>



# 100% DIGITAL IMPLANTOLOGY

- **One piece**, for the entire implant protocol: Use for **healing, impression and temporary prosthesis** without disassembly, thus without breaking the mucosal attachment.
- **Anatomical**: preserves the papillae and soft tissues for a better aesthetic result for the patient.
- **Scannable**.
- **Compatible with most brands** of CT scanners, implants and prosthetic bases.



1  
Screwing of the iPhysio®



2  
Taking of the digital or conventional impression



3  
Removal of the iPhysio®



4  
Placement of the final prosthesis

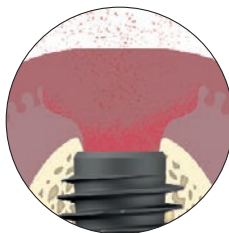
## ■ SIMPLE

- > 1 single piece for healing, impression and temporary restoration.
- > No disassembly, 4 manipulations instead of 8.
- > 1 impression less (no emergence impression).



## ■ SAFE

- > bacterial shield: Protected connection.
- > zirconia coating to prevent bacterial retention.



## ■ ACCESSIBLE

- > Save two parts : the scanbody and the temporary abutment.
- > Codified protocol.
- > Training and support of the dentist and the laboratory.

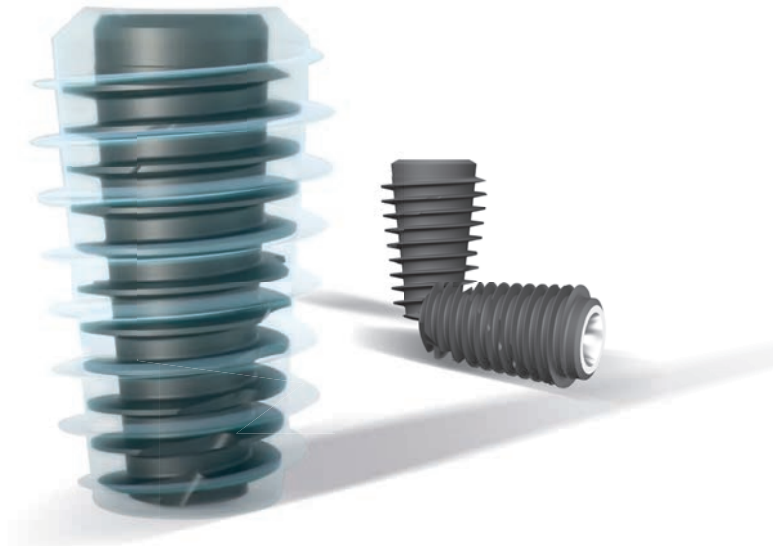


# A NEW PARADIGM IN IMPLANTOLOGY

---



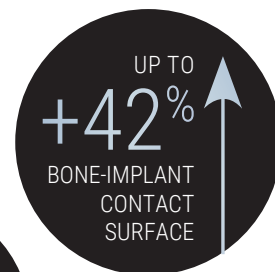
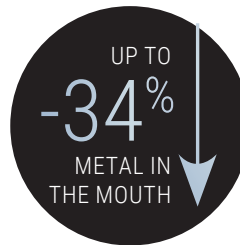
i bone®



# IBONE® INNOVATION - A MORE BIOLOGICAL IMPLANT

## ■ NEW IMPLANT DESIGN AND NEW PROTOCOL

A less mechanical and more biological approach to implant treatment with this new implant design. The amount of metal has been significantly reduced (-34%) to allow the bone to express itself. Thanks to an innovative protocol, the iBone® implant is inserted gently, leaving a healing space that allows a genuine «biological bond».



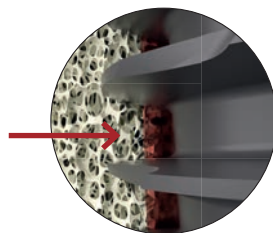
## ■ SIMPLE

- > Decision-making tree to adapt to all situations.
- > Guided protocol using tables on the kit.
- > Gentle insertion: the implant is inserted on to the threads.



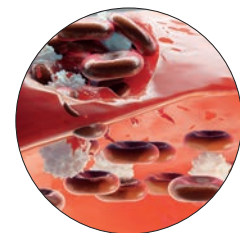
## ■ SAFE

- > 42% less bone stress.
- > Excellent primary stability (ISQ 73).
- > More bone around implants.
- > 34 % less metal in the mouth.



## ■ ACCESSIBLE

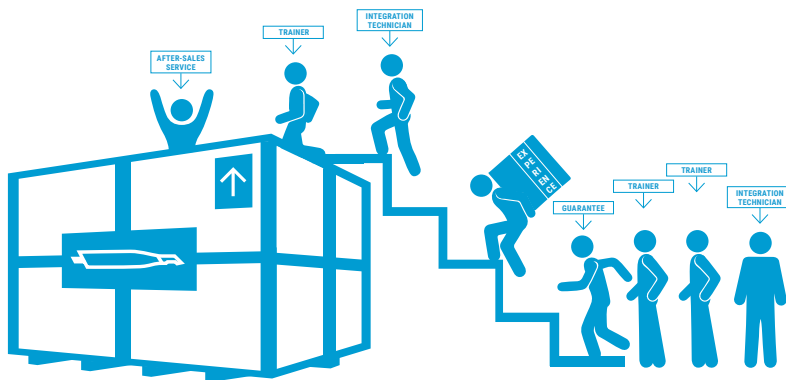
- > An alternative to grafts and sinus lifts.



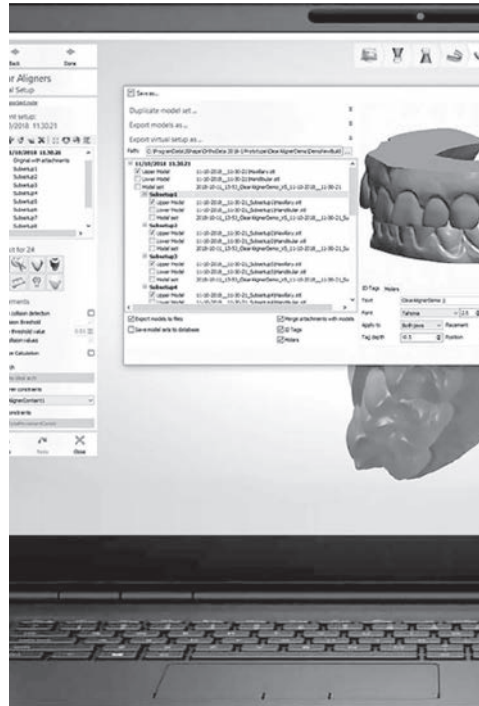
## DIGITAL EXPERTISE

---

- FRANCE'S 1ST CAD CAM PRODUCTION CENTRE
  - since 2010 (Teknika Lab)
  - 13 years of CAD CAM expertise
- 1ST INSTALLER OF INTRA-ORAL SCANNERS IN FRANCE
  - 8 years of expertise in intra-oral scanners.



- A TEAM DEDICATED TO SUPPORTING and integrating digital workflows in practices and laboratories.
- A RESEARCH AND DEVELOPMENT TEAM dedicated to continuous technological monitoring of scan performance, software, library enhancements and AI applications.





## LYRA ETK MAKES LIFE EASIER

---

- **SIMPLIFICATION** of patient treatment, monitoring and exchanges between dentist - laboratory - patient.
- **SUPPORT** for dental practices and laboratories in their development and integration of new treatment protocols.
- **ONLINE TOOLS**, available 24 hours a day via the Dental App.
- **TRAINING IN LYRA ETK** protocols via e-learning and face-to-face sessions.
- **OPEN AND UNIVERSAL SYSTEMS**: our protocols are compatible with most intra-oral scanners, implant systems and implant planning and design software.

# 100% ONLINE

---

Dental app : a unique and comprehensive online services environment

## PRODUCE

---

Use a single interface to quickly and easily order and manage all your prosthetic work, guides and aligners.



CAD CAM



Guides



Aligners

## ORDER

---

Quick and easy ordering.



eShop



Package tracking



iPhysio® Selector

## TRAINING

---

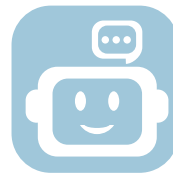
Everything you need to know about implantology and our products..



Media library



e-Learning



Assistant





## WORLDWIDE COMPANY

---

LYRA ETK is based in two main sites in **PARIS** and **SALLANCHES**.

LYRA ETK enjoys an international reputation.

30

Countries

25

Distributors

4

European  
subsidiaries

**LYRA.ETK**  
DIGITAL DENTAL PROTOCOLS  
Simple . Safe . Accessible

LYRA ETK - 726 rue du Général de Gaulle - 74700 Sallanches - France

Service clients France : T. +33 (0)1 76 42 00 60 | International Customer Service: T. +33 (0)1 76 36 14 04  
[info@lyraetk.com](mailto:info@lyraetk.com) | [www.lyraetk.com](http://www.lyraetk.com)