

i physio[®]

THE CODE

EVERYTHING YOU NEED TO KNOW
TO SIMPLIFY YOUR IMPLANT TREATMENT

The new-generation protocol that improves the outcome of your implant treatment while simplifying it. Result of a synthesis of LYRA ETK's expertises in implantology and digital technology, this anatomical 3-in-1 solution - healing abutment, scanbody and temporary abutment - is the central and unique element of a simplified no-disassembly protocol, from healing to prosthesis. The result is improved biological integration, making the treatment more durable and improving the aesthetic result. It can be used with most implant systems.



This booklet has been realized with Dr. Legros, Dr Cheylus, Dr Koclejda, and dentists who are members of the Actis Iphysio user club, to share their experiences and tips through clinical cases.



- 1/ CREATE A STABLE PROSTHETIC BEDP.4
- 2/ SUCCESSFUL IMPRESSIONP.6
- 3/ PRESERVE THE GINGIVAL PAPILLAEP.8
- 4/ SECURING THE PROSTHETIC ADAPTATION AND THE OCCLUSIONP.10
- 5/ TWO ADJACENT IPHYRIO MUST BE SEPARATE.....P.12
- 6/ MAKE A HD PHOTO TO TRANSMIT THE RIGHT INFORMATIONP.14
- 7/ COMMUNICATE WELL WITH YOUR LABORATORY.....P.16
- 8/ SERVE THE RESIN FOR YOUR TEMPORARY PROSTHESIS.....P.18
- 9/ PROSTHESIS AVOID MANIPULATION OF THE SUPRA-IMPLANT PARTS DURING ADJUSTMENT.....P.20
- 10/ USE THE SCREW TO REMOVE THE IPHYRIO®P.22
- 11/ MAINTAIN THE GINGIVAL CRADLE IN THE FINAL RESTORATIONP.24
- 12/ MAINTAIN THE PROPERTIES OF THE ZIRCONIA COATING.....P.26
- TO GO FURTHER: USING IBONE® WITH IPHYRIO®P.28

1

CREATE A STABLE
PROSTHETIC BED

YES



NO

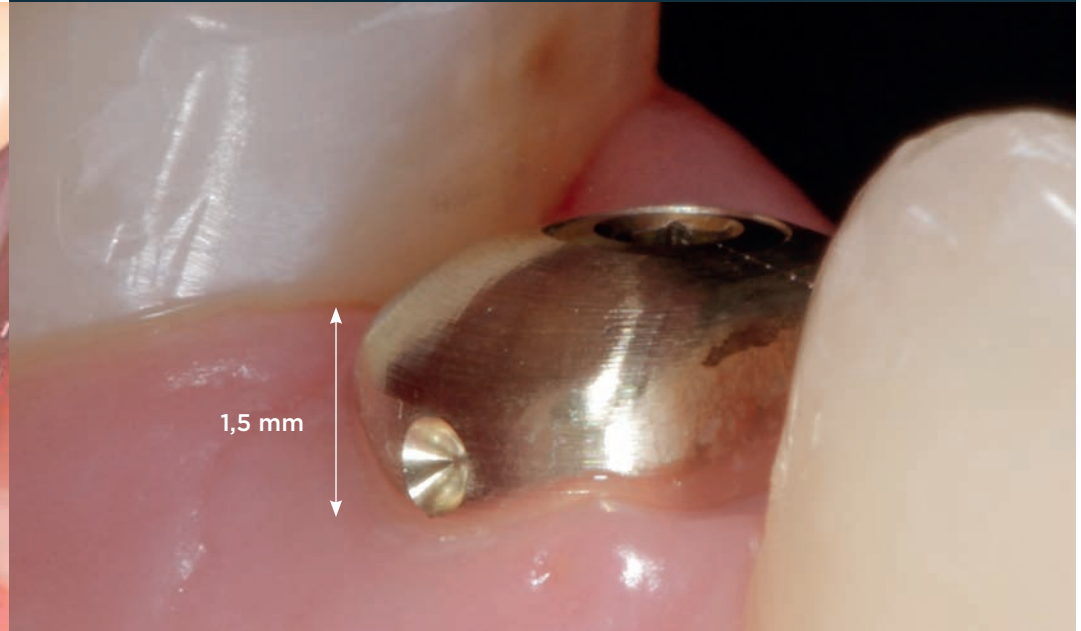
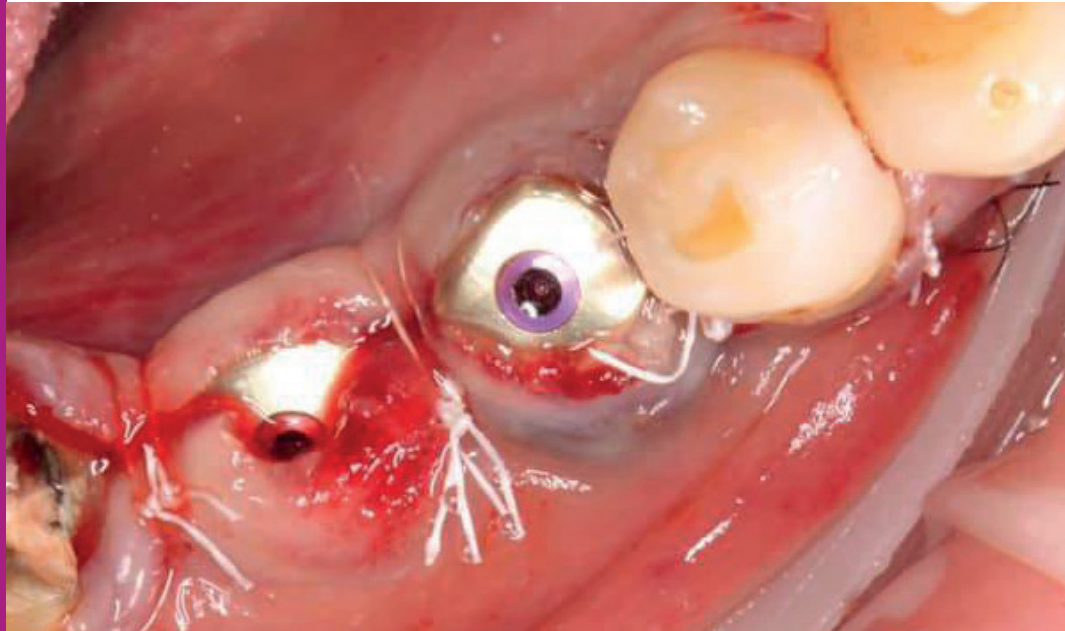
**The vertical positioning of the iPhysio®
Profile Designer determines the prosthetic bed**

The concave profile of the iPhysio® Profile Designer increases soft tissues and creates a seal for greater bone stability. Its convex profile maintains biological space by supporting the papillae and gingival line.

2

SUCCESSFUL IMPRESSION

YES



NO

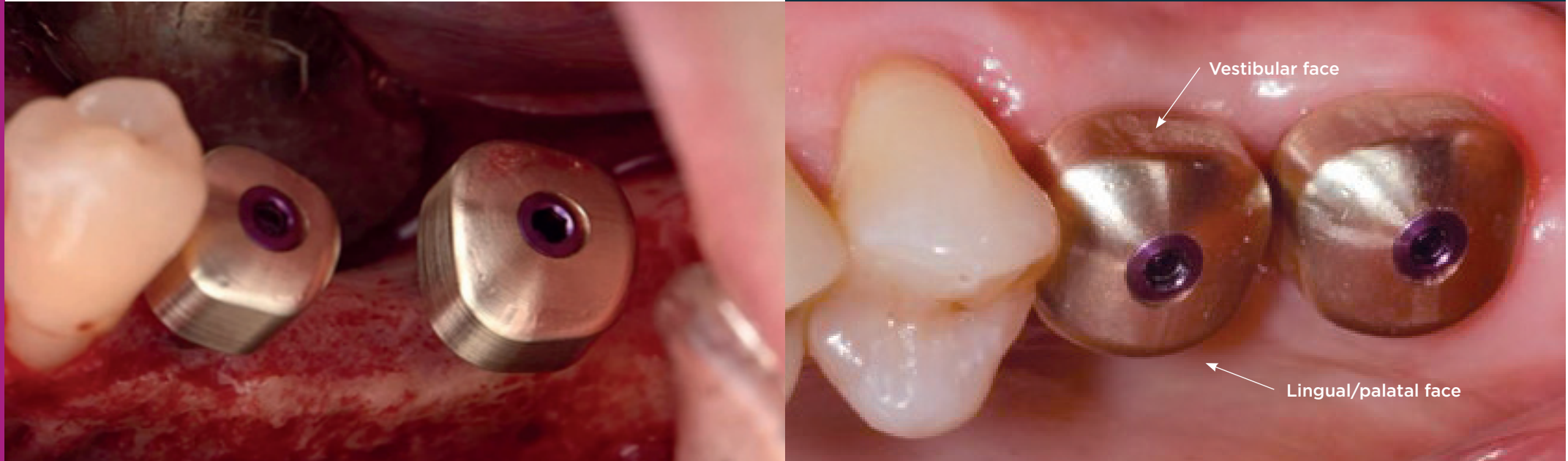
Place at least 1.5 mm above the soft tissues

To ensure the perfect recognition of the iPhysio® by the intra oral scanner, it must not be covered by the tissue during the impression process.

3

PRESERVE THE GINGIVAL
PAPILLAE

YES



NO

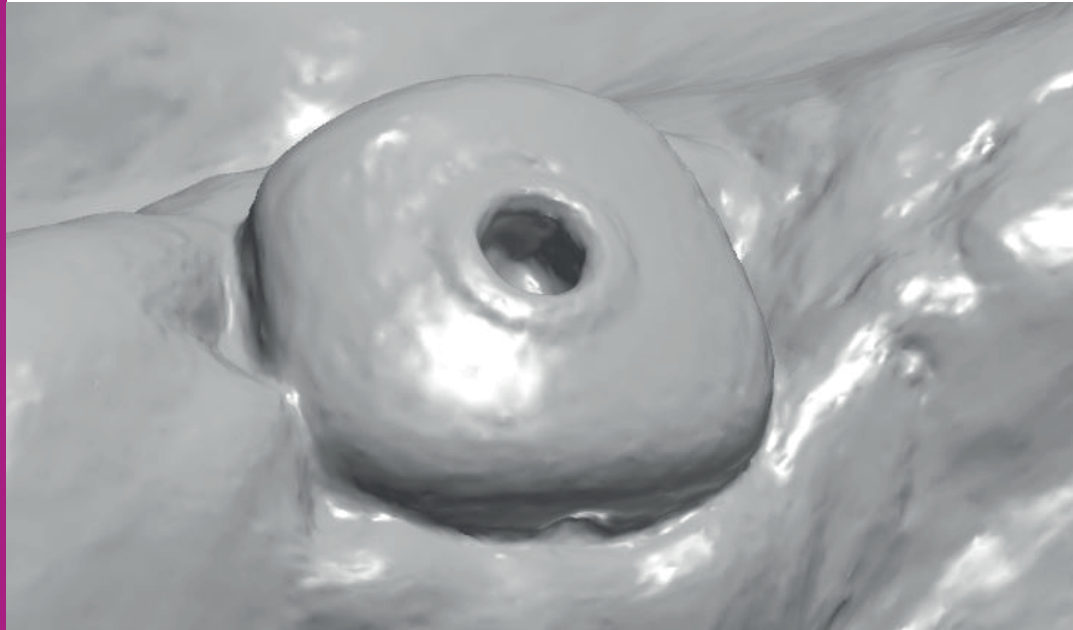
**Preserve the gum papillae through
the correct orientation of the iPhysis®**

The iPhysis® has two different sides, one vestibular, the other lingual/palatal. Positioning correctly the iPhysis® is ideally suited to the natural anatomy of the teeth.

4

SECURING THE PROSTHETIC ADAPTATION AND THE OCCLUSION

YES



NO

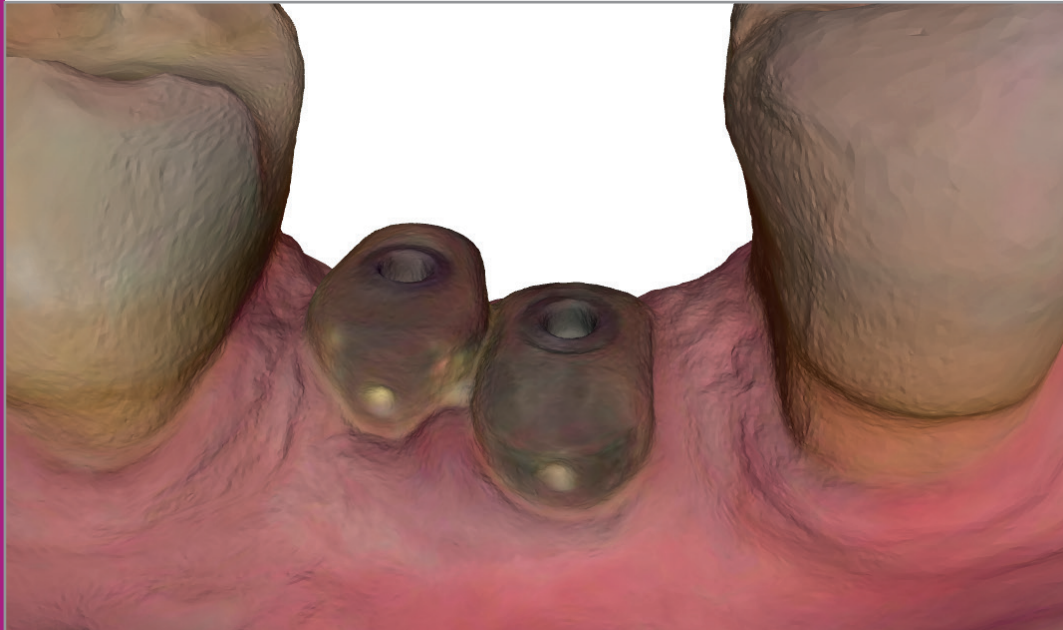
A smooth surface is the guarantee of a properly engaged iPhysio®

To ensure a perfect match between the prosthetic cradle of the iPhysio® and the final restoration, it is strongly recommended to systematically tighten the screw before taking an impression and to check the insertion with a retroalveolar X-ray.

5

TWO ADJACENT IPHYSIO®
MUST BE SEPARATE

YES



NO

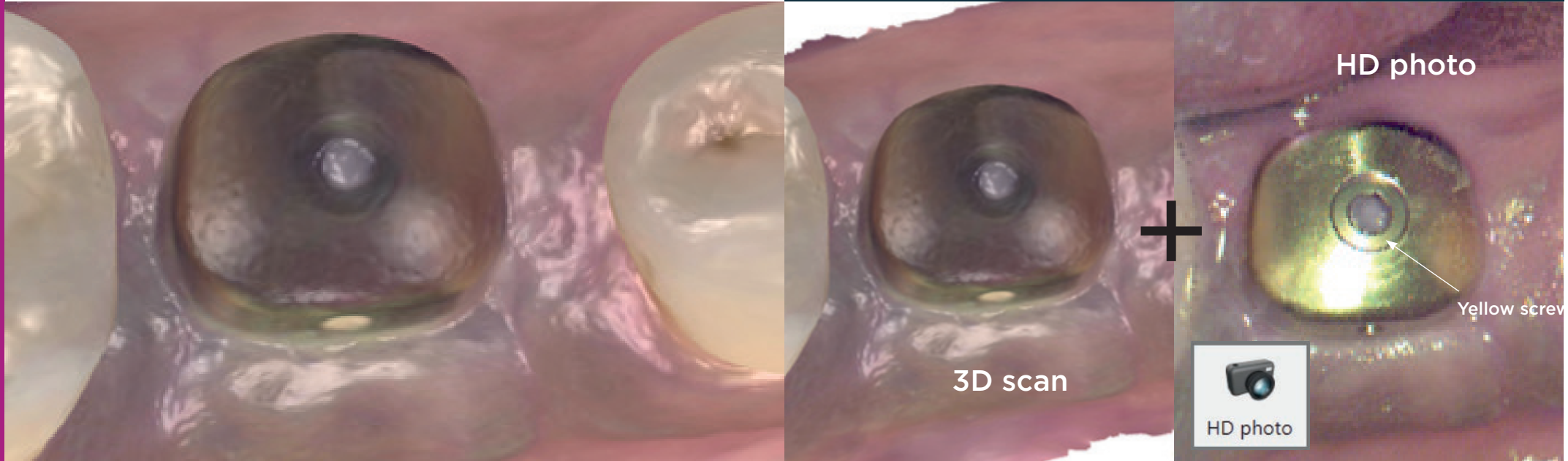
For the CT scan to be able to identify them individually, the iPhysio® must be spaced apart.

If they are in contact, the CT scan confuses them into a single part that cannot be recognized when matching them with the library. This also creates uncertainty as to their correct fit in the implant connectivity.

6

MAKE A HD PHOTO TO TRANSMIT
THE RIGHT INFORMATION

YES



NO

**HD photo, an indispensable
complement to your scan**

The transmission of the correct dimensional information from iPhysio® is essential. An HD photo makes it possible to confirm the colour of the screw and thus avoid any problem of malocclusion in the final prosthesis. In this case, the screw is yellow.

7

COMMUNICATE WELL WITH YOUR LABORATORY

Restorations			
Types	FDI	Type	Design settings
	36	Screw Retained Crown	AbutmentScrewRetainedCrown
Material	Emax		
Shade	A3		
Manufacturer	Euroteknika		
Connection	NP		
System	Naturall+		
Technical information:			
Order form settings file(s) IDs:	8e530ffe-2884-4a4c-b3df-a5aa00f0c33d_Lyra_Implanto_Lyra_Implanto_V33		
Order form settings file(s):			
Clinic ID:	02851		
Scan files	Scan type	File name	Date
	LowerJawScan	LowerJawScan.DCM	11/03/2021 18:39:53
	UpperJawScan	UpperJawScan.DCM	11/03/2021 18:40:38
	BiteScan	BiteScan.DCM	11/03/2021 18:41:25
Patient images:			

NO

YES

Comments			
Cr transcrewed on Naturactis implant, iphysio B2, shade			
Restorations			
Types	FDI	Type	Design settings
	25	Screw Retained Crown	Zr veneered Screw Retained Crown
Material	Zirconia - veneered		
Shade	A3		
Manufacturer	Euroteknika		
Connection	NP		
System	Naturall+		
Technical information:			
Order form settings file(s) IDs:	8e530ffe-2884-4a4c-b3df-a5aa00f0c33d_Lyra_Implanto_Lyra_Implanto_V33		
Order form settings file(s):			
Clinic ID:	1850601950		
Scan files	Scan type	File name	Date
	LowerJawScan	LowerJawScan.DCM	9/16/2021 3:42:04 PM
	UpperJawScan	UpperJawScan.DCM	9/16/2021 3:43:43 PM
	BiteScan	BiteScan2.DCM	9/16/2021 3:44:30 PM

A simple comment on the order form ensures that
the prosthesis is correctly produced

The correct dimensions of the iPhybio® must be provided. In the "Comments" box, indicate the type of iPhybio® and the exact reference to avoid any confusion.

8

SERVE THE RESIN FOR
YOUR TEMPORARY PROSTHESIS



NO

YES



The temporary abutment allows you to easily remove the provisional prosthesis when it is once

To preserve the resin of your temporary prosthesis when you are removing it for adjustments, keep the temporary abutment in its entirety.

9

PROSTHESIS AVOID MANIPULATION
OF THE SUPRA-IMPLANT
PARTS DURING ADJUSTMENT



NO

YES



**A used and sterilized iPhysio designer profile is ideal
for finalizing the prosthesis**

Once the provisional prosthesis has been formed, it can be finalised outside the patient's mouth on another iPhysio® Profile Designer that you have sterilised beforehand. This has 2 advantages: you preserve the soft tissue and you do not wear out the abutment clip unnecessarily.

10

USE THE SCREW
TO REMOVE THE IPHYSIO®



NO

YES



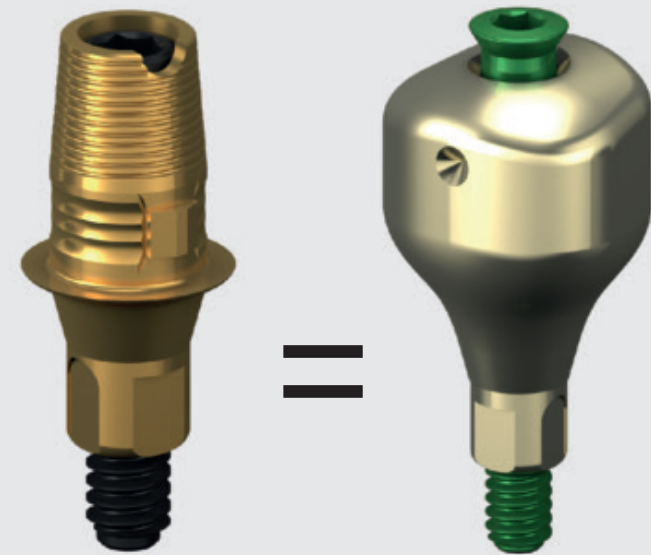
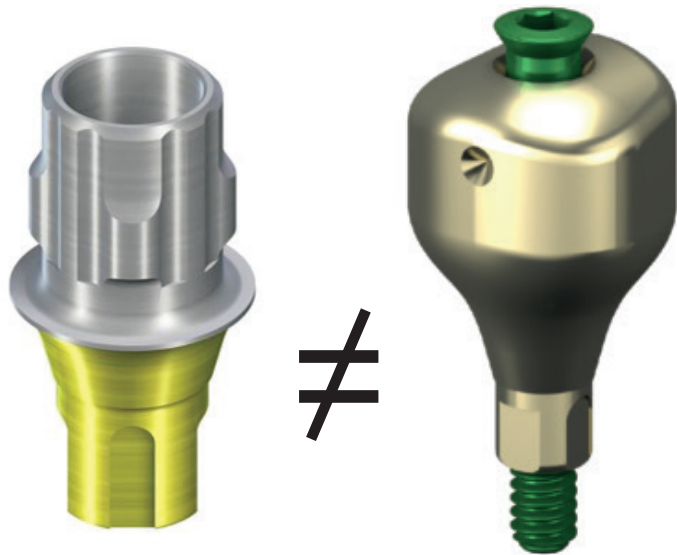
The screw is a good gripper

The iPhysio® has a captive screw. Pull out this screw slightly and use it as a gripper to make it easier to remove the iPhysio®. Thus, you preserve the marginal tissues.

11

MAINTAIN THE GINGIVAL CRADLE
IN THE FINAL RESTORATION

YES



NO

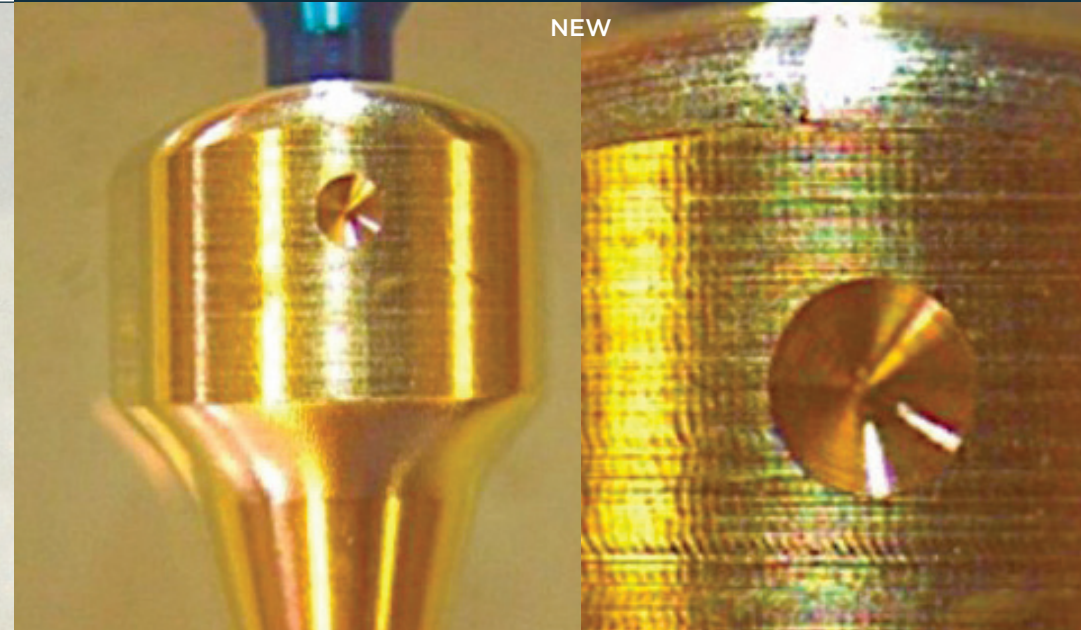
Select a titanium interface with the same emergence profile as the iPhysio® Profile Designer used.

The corresponding interfaces for each iPhysio® Profile Designer in each implant system are listed in our libraries. To preserve the soft tissue and avoid tissue compression, the emergence profile created during the soft tissue healing is retained in the final restoration.

12

MAINTAIN THE PROPERTIES
OF THE ZIRCONIA COATING

YES



NO

The zirconia coating is valuable

Single use allows the full benefit of the iphysio zirconia coating, which is optimal for the soft tissue interface.

Studies show that the surface, despite its zirconia coating, deteriorates during the cleaning and sterilisation protocol.



CONTROLLING BONE AND MUCOUS STRESS

The iBone® implant is the logical continuation of the iPhysio® concept at bone level. It is part of a biological approach to the implant treatment. It allows the creation of healing spaces between the threads, and provides the implant with great stability to maintain these spaces.

- 6 anatomical shapes
- 4 heights
- Can be scanned with all intra-oral CT scanners
- Zirconia coating
- 11 compatible connections (main implant systems)
- Temporary prosthesis

Concave profile for gingival healing

Convex profile supporting the gingiva

Subcrestal positioning to obtain deep connective fibers

Healing spaces

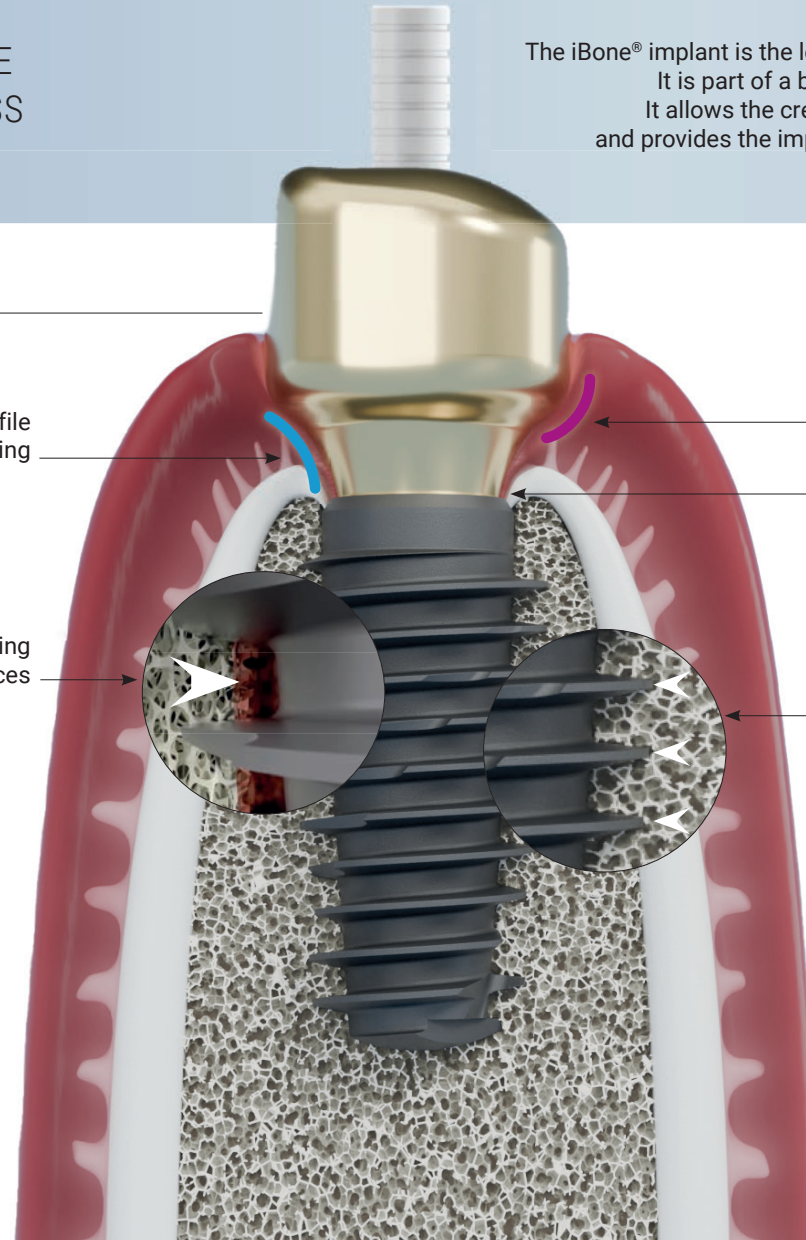
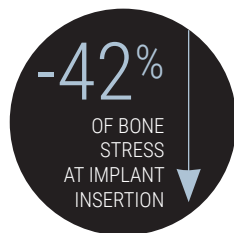
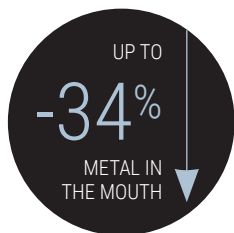
Implant insertion on the wide threads

CONTINUOUS BIOLOGICAL SEAL

Helps prevent peri-implantitis.

Enhance blood healing power

Creation of a continuous biological seal



PROFILE DESIGNER



www.iphysio.dental | info@lyra.dental | Tél. +33(0) 1 76 42 00 60

 EUROTEKNIKA S.A.S - 726 rue du Général de Gaulle, 74700 Sallanches (France)

Medical devices and procedure pack (combination of medical devices) of Class I, in compliance with European Regulation MDR (EU) 2017/745 (CE marking) and IIa and IIb medical devices in compliance with European Regulation MDR (EU) 2017/745 (CE 0459 marking) and/or European Directive 93/42/EEC (CE 0425 marking). Devices not reimbursed by National Insurance; they must be used by oral health professionals. Please read the instructions and user manual or operating technic carefully.

LYRAETK
DIGITAL DENTAL PROTOCOLS
Simple . Safe . Accessible