



A NEW PARADIGM IN IMPLANTOLOGY

i bone[®]

LESS MECHANICAL, MORE BIOLOGICAL

LYRAETK
DIGITAL DENTAL PROTOCOLS
Simple . Safe . Accessible

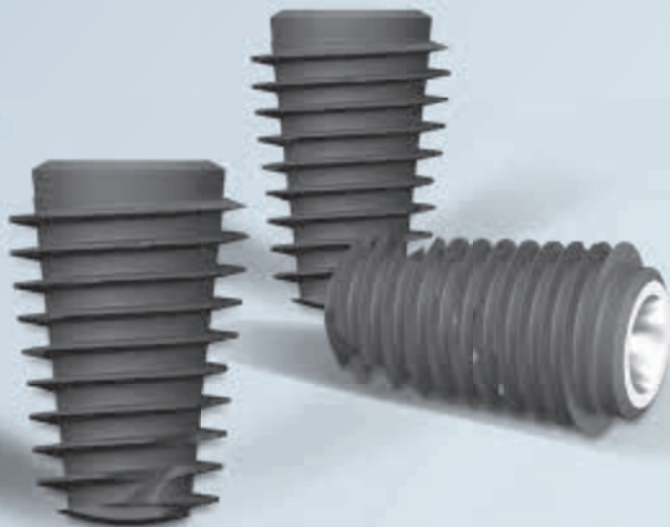
ibone®

LET THE BONE EXPRESS ITSELF AROUND YOUR IMPLANTS!

In addition to the mechanical anchoring performance of conventional implants, the iBone® implant and its reduced body make it possible to minimize the amount of metal in the mouth while offering a wider healing space for bone reconstruction. More than an implant, it is the most conservative, least invasive, simplest, and most cost-effective protocol in implantology.

Thanks to the implant's specific design, the bone-implant contact surface is increased, while taking up less space. iBone® is therefore a simple alternative to sinus grafts and sinus lifts.

iBone® is also a versatile implant that is more respectful of bone capital.



UP TO
+42%

BONE-IMPLANT
CONTACT
SURFACE

UP TO
-34%

METAL IN
THE MOUTH

NEW GENERATION IMPLANT DESIGN:

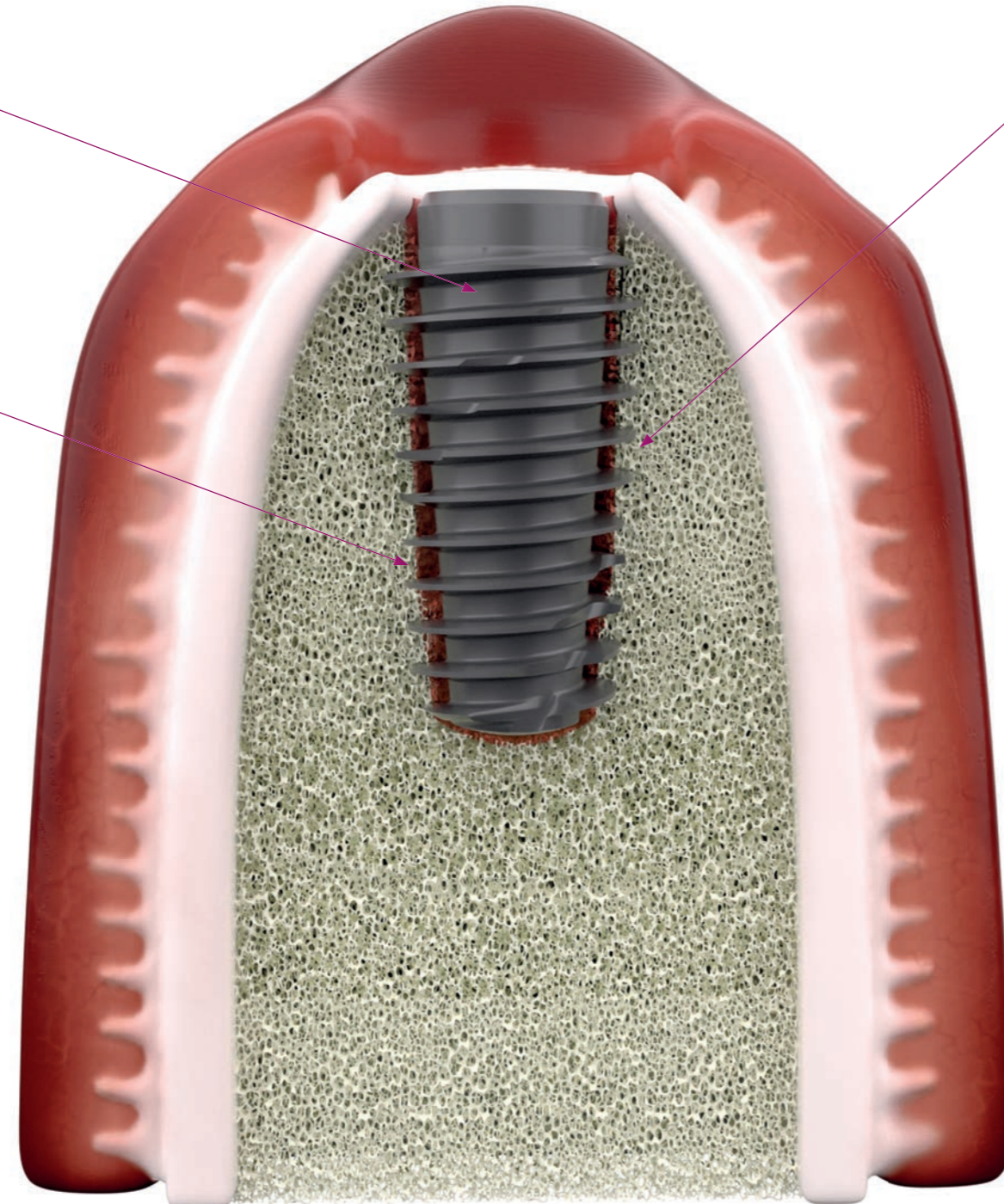
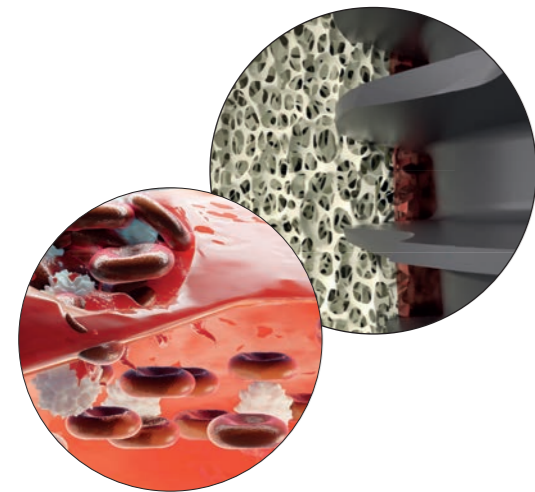
NARROW BODY

✓ LESS METAL IN THE MOUTH

Up to **34% less metal** than a conventional implant, thanks to its narrow body.

✓ MORE HEALING SPACE

In the iBone® protocol, priority is given to the bone and the blood clot. The dimensions of the implant are reduced as possible to leave a healing space between the drill hole and the implant. **This healing space is filled with blood and then new bone.**



Atraumatic apex

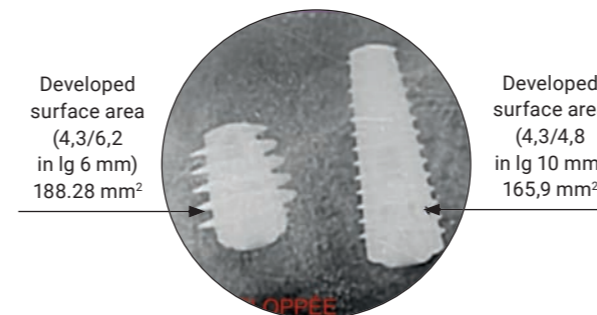
Threads are positioned as close as possible to the apex for optimum anchorage

Oblique self-tapping to facilitate implant insertion

WIDE THREADS

✓ MORE SURFACE OF BONE-IMPLANT CONTACT

The wide threads of the iBone implant provide a **bone-implant contact surface up to 42% greater** than a conventional implant.



✓ GOOD PRIMARY STABILITY

The average **ISQ** measured at implant insertion is **73**.



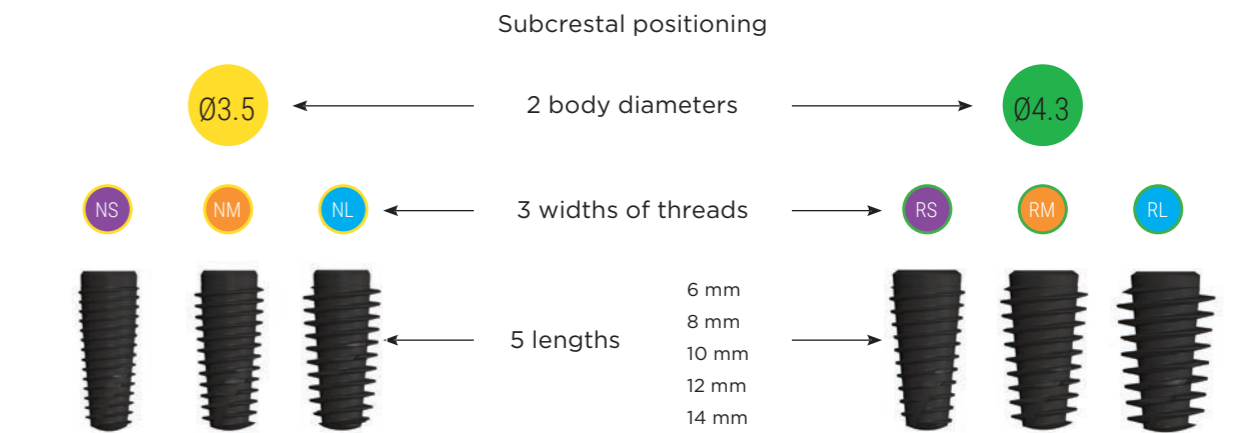
✓ GENTLE INSERTION

The torque consumed when fitting the implant is **reduced by 42%** compared to a conventional implant.

IBONE® NEW PROTOCOL

A more detailed, codified and visual approach to bone structure. It is combined with a protocol that is more respectful of the bone, meaning that the optimal conditions are in place to obtain a better secondary stability through biological bonding, in addition to excellent primary stability.

1 / I CHOOSE THE IMPLANT



2 / I FOLLOW THE KIT GUIDE

- > Guided protocols
- > Numbered drills
- > Illustration of instruments
- > Color codes for diameters
- > Graduated ruler

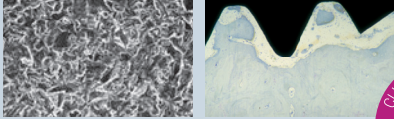


SAFE, SIMPLE AND GUIDED PROTOCOL

OUR RELIABLE AND PROVEN MANUFACTURING PROCESSES

CERTIFIED SURFACE QUALITY

- > Microsandblasting with titanium oxide.
- > Nitric and hydrofluoric acid etching.



PRECISE, LEAK-PROOF TAPERED CONNECTION

- > Internal hexagonal conical connection.
- > A single prosthetic connection common to all implant diameters.



BIBLIOGRAPHICAL REFERENCES



OUR QUALITY COMMITMENT



- 100% made in France implants
- Implants with lifetime guarantee
- Prosthetic parts guaranteed for 10 years



LYRA.ETK
DIGITAL DENTAL PROTOCOLS

Simple . Safe . Accessible

LYRA ETK - 726 rue du Général de Gaulle - 74700 Sallanches - France

Service clients France : T. +33 (0)1 76 42 00 60 | International Customer Service: T. +33 (0)1 76 36 14 04
sales@lyraetk.com | www.lyraetk.com